



United Nations
Educational, Scientific and
Cultural Organization



• **National Committee of New Zealand**
• Te Komiti o Aotearoa mo Nga Mahara o te Ao
• **Memory of the World**

Nomination Form **Aotearoa/New Zealand Memory of the World Register**

Round closing 31 August 2018 (no extensions given)

If you have any questions, email enquiries@unescomow.org.nz

A member of the Memory of the World Committee can help you complete the form or work with you to help you decide whether to make a submission.

Summary of criteria for Inscription

The documentary heritage should have the following characteristics:

- Provenance should be known
- Be unique and irreplaceable
- Collection should be closed, i.e. not being actively added to

The documentary heritage should have at least one of the following:

- **TIME:** Be evocative of its time e.g. a crisis, significant social or cultural change; a new discovery, the first of its kind
- **PLACE:** Contain significant details about a locality important in the history of New Zealand
- **PEOPLE:** Reflect significant aspects of human behaviour, or social, industrial, artistic or political development

- **SUBJECT AND THEME:** Represent particular historical or intellectual developments e.g. culture, education, science, medicine, politics, ideology, sports, the arts
- **FORM AND STYLE:** Have outstanding aesthetic, stylistic or linguistic value

Important

Read before completing the nomination form:

1. Most of the information requested should be readily available.
2. Experience has shown that obtaining statements from experts may take the most elapsed time.
3. Expert's testimony (section 3.4) needs to focus on the significance and provenance of the documentary heritage for understanding our past and not, for example, on the importance of the event or the person.
4. The documentary heritage needs to meet at least one of the criteria. It does not need to meet all the criteria.
5. The response boxes are an indicative size only. You can use as much or as little space as required to answer the questions.
6. We understand that you may not have information on the risks to the nominated documentary heritage available. If this is the case, then note this in your answer to section 6.
7. The nominating institution is accountable for consultation and liaison with all relevant stakeholders.

Other Information

The Aotearoa/New Zealand Memory of the World Committee reserves the right to consult with experts of their choice on nominations submitted for inscription to the Aotearoa/New Zealand Memory of the World Register

If successful, this completed nomination form will be published online at: www.unescomow.org.nz under "New Zealand Register". Please read our [privacy policy](#) to understand what will be published.

After completing the form

Email the completed form as an attachment in **Word** file format to: enquiries@unescomow.org.nz

You will receive an email within 5 days to confirm receipt of the nomination form. Please email enquiries@unescomow.org.nz if you do not receive this confirmation.

It is important to provide the form in Word file format so that we can remove some personal details prior to publication on our website.

If your nomination is successful

We will work with you and your communications advisor (if any) to make sure that the successful inscription is used to promote your institution and the importance of documentary heritage. You will need to ensure that resource is available to contribute to the promotion.

You will be presented with a certificate of inscription to the Aotearoa/New Zealand Memory of the World Register.

You may only use the Memory of the World logo when it is associated with the inscribed documentary heritage.

We encourage you to place the Memory of the World logo in a prominent place when inscribed documentary heritage is used in exhibitions including digital exhibitions.

The Aotearoa/New Zealand Memory of the World Committee reserves the right to remove documentary heritage from the register if it no longer meets the registration criteria.

Title of the documentary heritage item or collection

This should be the complete name of the documentary heritage as it is usually known. Include dates if they are usually part of the name.

James Herries Beattie: Papers (1848-1972)

Section 1: Nominator Details

This section is for information about the source of the nomination and the authority under which it is made.

A copy of the Aotearoa/New Zealand Memory of the World programme's privacy policy is available on its [website](#).

1.1 Name of nominator (person or organisation)

Full name of the person(s) or organisation(s) making the nomination. *The nomination may be submitted jointly by more than one person or organisation*

Hocken Collections, Uare Taoka o Hākena, University of Otago

1.2 Relationship to the nominated documentary heritage

Explain the nominator's relationship to the documentary heritage. *For example, the nominator may be a responsible officer of the library or archive which owns it; or he/she may be a private individual with a research interest in it.*

Owner

1.3 Contact person

Provide the name of the person who is responsible for the nomination process.

Anna Blackman

1.4 Contact details

Provide sufficient details to allow easy communication with the contact person.

Section 2: Identity and Description of the Documentary Heritage

2.1 Title of inscription

If the nomination is successful, what do you want it to be titled (e.g. for certificates)? Please use a maximum of 6 words.

Herries Beattie Papers (1848 – 1972)

2.2 Description of the documentary heritage

This should include a full description of what is included in the documentary heritage, its scope and its size. Include details of the type of documents e.g. letters, film, images etc.

James Herries Beattie created the collection over a lifetime of research and writing. Beattie (known as Herries) was born in Gore in 1881, the son of Scots immigrants. He worked briefly as a journalist and librarian, as an ethnographic researcher for the Otago Museum and then owned and ran a bookshop in Waimate but much time was devoted to research and writing.

The earliest items are childhood writings and diaries, interesting examples of 19th century childhood writing from the mind of a bright and curious boy.

A very significant part of the collection are the records of interviews with South Island Māori conducted by Beattie in the early 1920s as an ethnographical project done in collaboration with H.D. Skinner of the Otago Museum. These notes were to inform many of Beattie's subsequent writings and publications but were not published in full until *Traditional Lifeways of the Southern Maori* (ed Atholl Anderson) was published posthumously in 1994.

The Maori that Beattie met through this work were to continue to inform him and included people such as Erute Poko Cameron, Tiemi Haereroa Kupa, Taare Reweti Te Maiharoa, Tuhituhi Te Marama, Hone (Teone) Taare Tikao and Eruete Kingi Kurupohatu.

There are many folders of correspondence with Maori, historians, writers, European pioneers and their families and naturalists from many parts of the South Island on Maori history and legends, Maori food gathering, Maori trails and travel, Maori and European place names, the use of Maori words in different parts of the Island, South Island birds and bird names and early European pioneer history and gold mining history.

Many notebooks collate material on specific topics such as Maori and European place names in the South Island, Māori warfare, early European settlements, early Otago run holding, birds (for a book on native birds not published), gold mining, South Island legends, notes copied or gathered from other individuals.

Other material includes manuscripts of both published and unpublished works, printed proofs for publications, short stories, poems, albums of newspaper clippings on the topics outlined above,

addresses and lectures, essays and papers from other individuals. There is a small number of volumes of newspaper advertisements for Beattie's bookshop in Waimate.

A small number of maps were donated to the Hocken with the papers. These are housed and catalogued separately as part of the Hocken maps collection. These maps identify Maori place names in particular.

A printed and bound inventory was produced for MS-582 in 1987 and is available for consultation. It includes an index of names within the MS-0582. MS-0181 and subsequent additions to the collection have been incorporated in the arrangement of the collection under ARC-0162.

Beattie produced many works of lasting importance and by the end of his career he had produced around 44 titles, many were reprinted several times. He was awarded the Percy Smith Prize for achievements in anthropology in 1967 and was made an MBE.

Beattie died at Timaru in 1972.

The collection is 5 linear metres, and includes 469 items (folders of correspondence, newspaper clippings, notebooks, albums, a few photographs and maps).

2.3 Catalogue, registration or bibliographic details

This should include any bibliographic, registration, inventory, classification and/or call numbers that uniquely identify the documentary heritage.

Archives references : ARC-0162, MS-0582; MS-582; MS-1518; MS-1519; MS-0181; MS-0147; MS-4237

Maps references : 862 1900 ecd (x 3), 890 1942 eg, 880 1900 (x2), 893 1899 a [copy 2]

2.4 Visual documentation

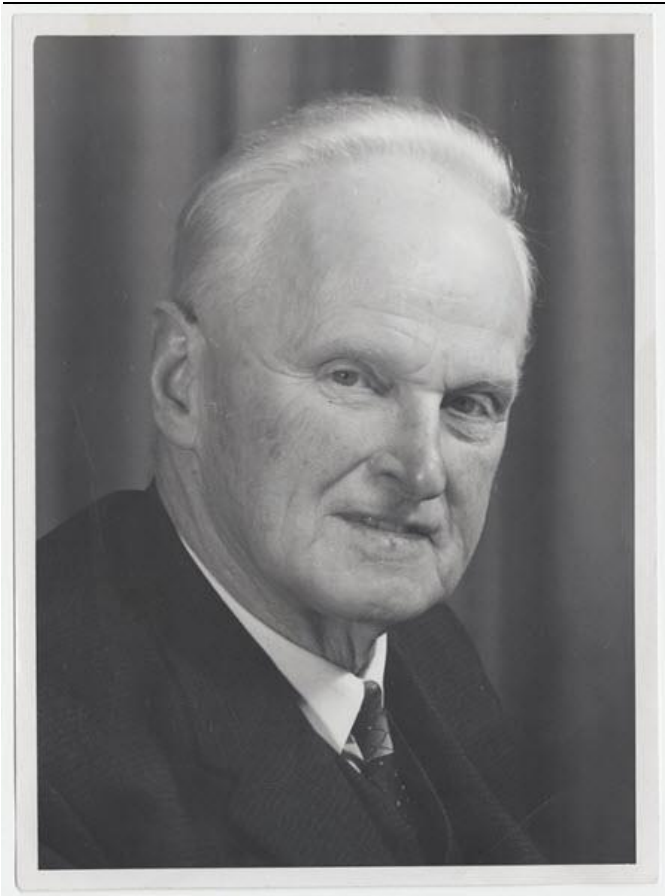
Where available and appropriate, supply photographs or videos of the documentary heritage. Please provide images that can be used for the purposes of promoting of the World.

A Boy's DIARY. Gore

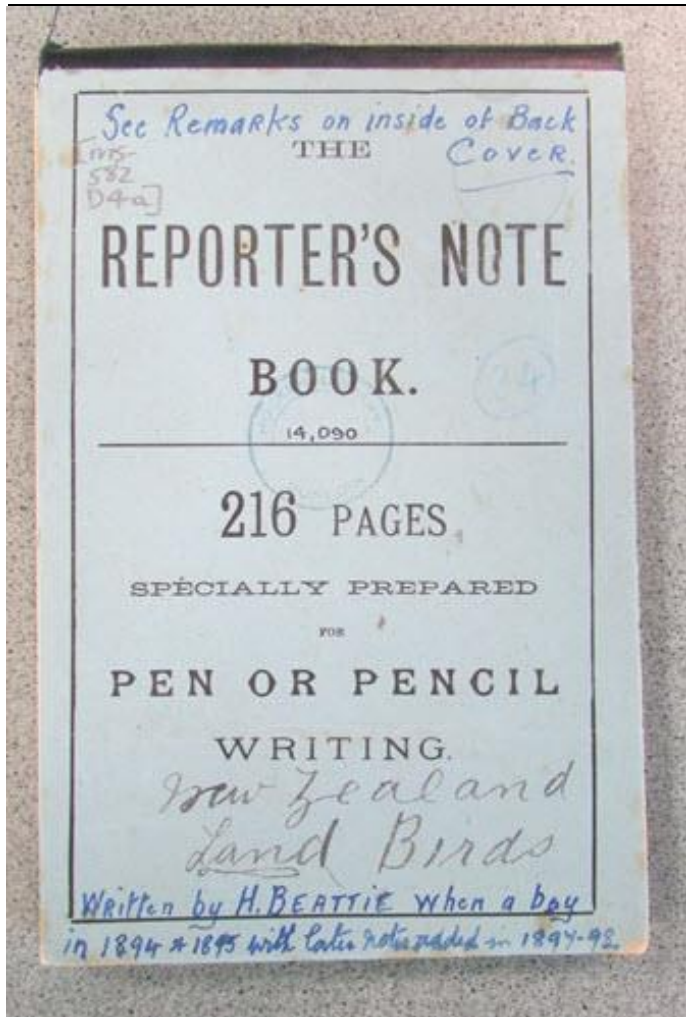
Introductory. October 1st 1892.

I am a boy who lives in Gore and I am eleven years old. I am going to try to keep a diary and people who keep diaries have to always tell the truth I hear, so I am going to try to keep truthful as far as possible in my diary. This is not the first book that I have written for I have written one before this called "A Reading Book for spare moments". I gave it to mother and father as a birthday present. Their birthdays being on the First and Second of October. I mean if possible to keep this book till I grow big as a remembrance of the days when I was a youth. Unlike the other book this book is not going

The first page of Beattie's boyhood diary. (MS-582/L/1)



Beattie in later life. (MS-582/R/1)



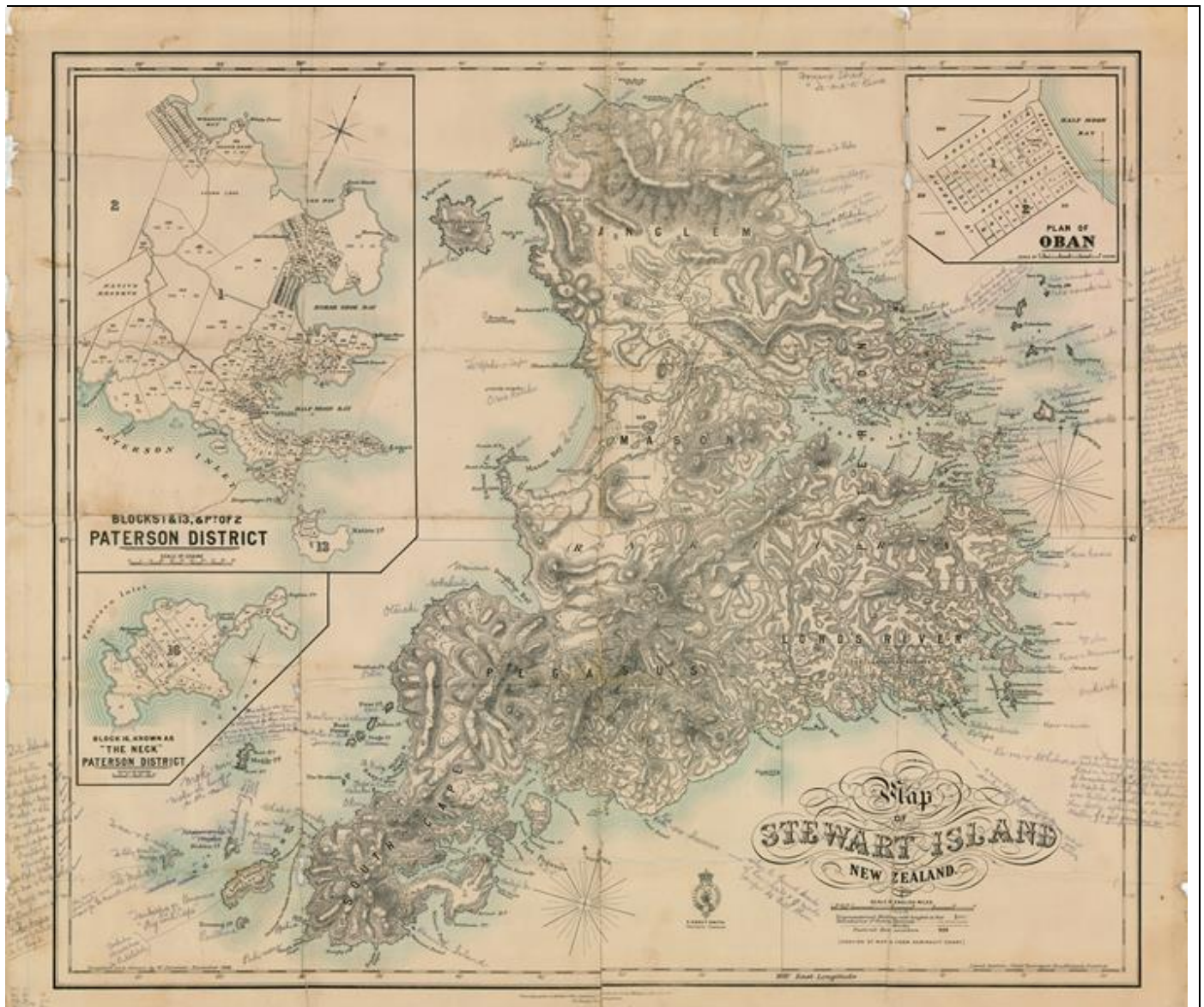
Notebook used for information on native birds, (MS-582/D/4/a)

List of Maori Interviews 1921-42. (1)

Date	Name of Interviewee	Hours	Pages	Time	1927
May 19, 1922	Honore Te Tohu Te Maire	2	11	2:45 pm	10
May 31, 1927	"	1	3	5:20	13
Dec. 1923	Mrs. Selwyn	1/4	1	4:45 pm	4
Jan. 4, 1925	Mr. Te Pahi Spencer	2 1/2	6	2:15 pm	8
"	Enoch Peko Cameron	1/2	1	5:45 pm	4
"	W. T. P. Spencer	2	2	8:30 pm	6
"	R. P. Cameron	1	1	8:30 pm	1 + 12
Jan. 4	W. T. P. Spencer	2 1/2	11	10:00 am	7
"	John Rakiraki	1 1/2	3	7:45 pm	3
"	"	1 1/2	3	7:45 pm	3
"	"	1 1/2	3	7:45 pm	3
"	W. T. P. Spencer	5 1/2	10	7:30 am	3
"	"	2 1/2	5	8:00 am	7
Mar 23	Thi Te Kape Jacobs	1 1/2	6	10:15 am	12
"	Mrs. Selwyn	1/2	1	10:15	4
Apr 12	Thi Jacobs	2	7	10:15	2
Jan 20, 1927	W. T. P. Spencer	1/2	1 1/2	10:15	1
"	R. P. Cameron	1/2	1 1/2	10:15	1

Spencer	John Rakiraki	John Maitani & Mrs
14	3	3
4	6	3
2	1	1
6	6	3
13 1/2	16	10
3	9	2
33	10	3
1	6	4
15	27	19

Note book page listing the names of informants, dates of interview, and number of hours interviewed.



Printed map of Stewart Island showing numerous place name annotations by Beattie. 893 1899 a [copy 2]

2.5 Bibliography

This should be, where possible, a list of 3-6 published sources that have been produced using (i.e. drawing heavily on) the documentary heritage to attest to the item/collection's significance.

Beattie authored around 44 titles based on his research, a selection is given below.

Beattie, Herries, *Tikao talks : traditions and tales / told by Teone Taare Tikao to Herries Beattie*.
Dunedin : A H & A W Reed 1939.

Beattie, Herries, *Pioneer Recollections* series – a series of narratives reprinted from the Mataka Ensign between 1918 to 1956.

Beattie, Herries, *Traditional Lifeways of the Southern Maori*, ed Atholl Anderson, Otago University Press 2009.

Ballantyne, Tony “On Place, Space and Mobility in Nineteenth-Century New Zealand”, *NZ Journal of History*, 2011 Volume 45 No. 1, by, p 50-70

Ballantyne, Tony, *Webs of Empire*. Wellington Bridget Williams Books 2012

Stevens, Michael J, “Kai Tahu writing and cross-cultural communications”, *Journal of NZ Literature*, Vol28, No.2, 2010

Kā Huru Manu (<http://www.kahurumanu.co.nz/>) – the Ngāi Tahu digital atlas.

Tāngata Ngāi Tahu : People of Ngāi Tahu Volume One, Helen Brown and Takerei Norton (eds), Te Runanga o Ngai Tahu with Bridget Williams Books, 2017.

Section 3: Assessment Against the Criteria

3.1 History/provenance

Provide a summary of the provenance of the documentary heritage. For example, how and when was the material acquired and integrated into the holdings of the institution?

The first donation received was interview material collected during the ethnographical project done in collaboration with H.D. Skinner of the Otago Museum in the 1920s with an additional donation in January 1953. This is listed as MS-0181/001 to MS-0181/008 under the “Interviews” series (SER-00835).

Beattie commenced sending regular parcels of material (now in MS-0582) to the Hocken in 1955 and continued over ten years, with a small addition in 1972, eventually numbering a total of fifty parcels. Beattie’s collection was stored throughout his house in Waimate and he would send it as he was able. He intended to go through every item before forwarding it, annotating where he thought necessary and scoring through all material used in his published work.

While most of the items in the collection were created by Beattie, there are a small number of items authored by others, and given to Beattie to assist with his research.

Papers in MS-1518 and MS-1519, were originally given to Miss June Spencer by Beattie in 1965. By 1996, they were owned by Mr M. F. Rodgers, who had purchased them at auction at Todd's, Invercargill. They were loaned to the Library for copying in 1996 and these copies are available at the reference number MS-1518. The papers were auctioned again at Plumbly's Auction House in Dunedin

in December 2003 when the Library purchased the originals of two documents - which are now available at the reference number MS-1519.

The papers in MS-4237 were purchased from Quilters Bookshop in May 2014, and had previously been in the possession of Miss Margaret Fife Beattie (1918-2008), daughter of Herries Beattie.

3.2. Uniqueness of the documentary heritage

Give a brief explanation of why the documentary heritage is unique and irreplaceable.

Much of the content was compiled as a result of interviews or correspondence with people who lived through the 19th and early 20th centuries in the South Island whose knowledge and experiences would not otherwise be recorded.

Beattie was an extremely thorough researcher and the information he collected is detailed and specific to the South Island. Leading up to the Ngāi Tahu claim to the Waitangi Tribunal, researchers for iwi and Crown, used the Beattie papers repeatedly as they provided reliable and detailed historical and ethnographical data not found elsewhere.

3.3 Assessment against the significance criteria

Provide an explanation of what criteria the documentary heritage meets and why it meets those criteria. The documentary heritage must meet at least one of the criteria in this section. An explanation of each criteria is given on the front page of this form.

Time:

The papers document traditional knowledge and memories of 19th century South Island people, both Maori and Pakeha, a key time in NZ history. Much knowledge recorded is of pre-contact times, through memories passed down generations.

Place:

The collection records thousands of South Island Māori place names gathered by Beattie from his lifetime work of interviewing Ngāi Tahu people. Subsequently, the Beattie collection was an important source of knowledge relating to Ngāi Tahu place names for Kā Huru Manu (<http://www.kahurumanu.co.nz/>) – the Ngāi Tahu digital atlas. In particular, the Beattie collection is arguably the most important source of Māori place names in the southern part of Te Waipounamu.

Much of the cultural information in the collection is linked to a specific areas of the South Island, in particular Murihiku, Canturbury, and to a lesser extent Westland and Nelson.

People:

The collection is a richly detailed and unique source of information on many aspects of Ngāi Tahu culture and history, and to a lesser extent on pioneer South Island Pakeha history. While Beattie published many of the Māori place names in his newspaper articles and books, many of the stories of who and how he gathered this information is recorded in his unpublished material. This material has helped bring to life many of these Ngāi Tahu informants whose stories are usually hidden. The recently published *Tāngata Ngāi Tahu* tells the stories of many of these place name informants.

Correspondence with a range of other researchers and writers includes Elsdon Best, Mervyn McLean, Frederick Chapman, Robert McNab and others

Subject and Theme:

As well as documenting pioneer European history of the South Island the collection provides a very significant overview of uniquely Ngai Tahu culture and knowledge, such as traditional stories and narratives, naming of places, things and people, food gathering practices, hunting and fishing, pounamu, weapons and tools, textiles, knowledge of plants and animals, customs relating to childbirth, death and other life events, religion, health, sickness and medicine, dance, trails and travelling, waka, stars, and weather.

Form and Style:

Beattie's early diaries and compilations of stories are an outstanding example of late 19th century childhood writing.

In his letter of support Prof Tony Ballantyne states that "The Beattie collection is particularly significant because it provides unrivalled insights into the intellectual habits and cultural world of a key colonial collection."

3. 4 Testimony of at least two independent experts

The committee requires testimony from at least two independent people or organisations who can give an informed opinion about the significance and provenance of the documentary heritage.

The informed opinion should focus on the criteria for inscription provided above and on the front page of this form. Please provide up to one page from each expert in support of your submission.

Expert One

Name	Atholl Anderson CNZM, FRSNZ, FAHA, FSA
------	--

Qualification(s)	Emeritus-Professor, Australian National University
Paragraph in support	<p>Kia ora Anna, I write briefly in regard to your request for a letter in support of the Hocken nomination to the NZ Memory of the World Register.</p> <p>I support this nomination wholeheartedly. The J.H. Beattie collection is a very significant resource for southern New Zealand particularly, but also New Zealand generally. It includes abundant material on both the early Pakeha settlers of the southern region and the Maori history of the South Island as a whole.</p> <p>I came to appreciate its extraordinary value in research, in the late 1980s, leading up to the Ngai Tahu claim to the Waitangi Tribunal, when all of the researchers, for iwi and the Crown, used the Beattie papers repeatedly and rated them as providing reliable and detailed historical and ethnographic data. In fact, so often was his collection consulted during the Tribunal process that concerns were raised about physical stamina of the material, one result of which was the decision to publish one of his unpublished manuscripts (manuscript 181, consisting of 1150 closely written pages of text and notes).</p> <p>I had the privilege of editing and publishing this for a major book, Traditional Lifeways of the Southern Maori (Otago University Press) which was published in 1994, reprinted in 1995, and went into a second edition in 2009; now almost sold out. This book, like so many published by Beattie himself, is widely valued, not least amongst Maori, for the huge amount of original information it contains on southern Maori history and ethnography. Beattie was, by far, the most important collector of Maori oral history in the South Island, and he is regarded warmly and with great respect by Ngai Tahu whanui.</p> <p>Beattie's collection has come, rightly, to be seen as a significant taonga of the Hocken Library, and we can only hope that its nomination to the Register succeeds.</p> <p>Nga mihi ki a koe, Atholl Anderson</p>

Expert Two

Name	Professor Tony Ballantyne FRSNZ
Qualification(s)	Pro-Vice-Chancellor Humanities

	University of Otago
Paragraph in support	<p>The Herries Beattie papers at Hocken Collections is a remarkable body of materials compiled over eight decades of intellectual work. Beginning as a boy of eleven, Beattie was an enthusiastic writer and collector and he pursued those intellectual passions alongside his career as a book-keeper, journalist, and bookseller. Beattie's interests as a collector were expansive, ranging across natural history (especially birds), place names, local history with a particular interest in 'pioneers', Maori oral history and traditional life ways. He pursued these questions through relentless reading, through the production of voluminous clipping-books, through interviewing the knowledgeable and the elderly, through exchanging material with other collectors, and through research trips undertaken by train, bike, and foot. The collection of materials that Beattie accumulated and gifted to the Hocken is almost certainly the individual richest collection focused on a particular region held in any New Zealand repository: the Beattie papers are a richly textured and voluminous guide to the history of southern New Zealand in the nineteenth century as well as an invaluable starting point for the study of Waitaha, Kati Mamoe, and Kai Tahu in the preceding centuries as well. Beattie's materials on Kai Tahu Whanui are especially rich, reflecting the close relationship he established with a range of authoritative informants including Erute Poko Cameron, Tiemi Haereroa Kupa, Taare Reweti Te Maiharoa, Tuhituhi Te Marama, Hone (Teone) Taare Tikao and Eruete Kingi Kurupohatu.</p> <p>The Beattie collection is also particularly significant because it provides unrivalled insights into the intellectual habits and cultural world of a key colonial collector. In addition to clipping-books, it is full of notebooks, manuscript drafts, outlines for talks, and manuscripts of Beattie's published and unpublished works, including a novel, verse and a number of short stories. It allows us to access the working methods and intellectual connections that shaped the production of Beattie's key works including his series of <i>Pioneer Recollections</i>, <i>Tikao talks</i> (1939), <i>Maori lore of lake, alp and fiord</i> (1945), and <i>Our southernmost Maoris</i> (1954).</p> <p>I have made extensive use of the Beattie collection, using it as the starting point for at least half a dozen chapters and journal articles, including the prizewinning article 'On Place, Space and Mobility in Nineteenth-Century New Zealand'. It is also the foundation for the intellectual biography of Beattie that I am currently writing. In my judgment, this is an exceptionally rich collection that provides culturally significant insights into tribal history and colonial history.</p>

The above experts have given their written permission to provide this information to the Memory of the World Committee and they have agreed that the provided information can be published without email and contact details and that they can be contacted by the Register Subcommittee if required.

Yes

No

Section 4: Legal Information

4.1 Owner (name and contact details)

Provide the name and full contact details of the owner or owners, whether an institution or an individual.

Hocken Collections
University of Otago
PO Box 56
Dunedin 9054

4.2 Custodian (name and contact details if different from the owner)

Provide the name and full contact details of the custodian, whether an institution or an individual.

Sometimes the custodian of the documentary heritage may not be the same as the owner. It is essential to establish both before a nomination can be added to the Register.

4.3 Legal status

State whether the documentary heritage is owned privately, or by a public institution, or by a commercial corporation. Details of legal and administrative powers for the preservation of the documentary heritage should be the name of the Act, or other instrument of administrative power, that gives the owner and/or the custodian the legal power to preserve the documentary heritage.

The papers are owned by the University of Otago, having been either donated to or purchased by the Hocken Collections, University of Otago Library. The papers come under the provisions of the Hocken Collection Deed of Trust 1907.

4.4 Accessibility

Provide a brief description of how the documentary heritage may be accessed. All access procedures and restrictions should be clearly stated.

There are three levels of access:

- access to verify the significance, integrity and security of the material. This is the minimum condition for inscription

- access for reproduction, which is strongly encouraged
- public access in physical, digital, or other form

The collection is catalogued to item level on the Hākena online catalogue. It is available to view free of charge at any time during the public opening hours of the Hocken Collections.

Access is not restricted with the exception of a small number of extremely fragile items, photocopies of these items are available to researchers but the originals can be used in exceptional circumstances with the permission of the Head Curator – Archives.

Researchers using the collection are able make their own digital copies for research purposes, and to order digital reproductions of items from the collection.

The Hocken provides a written reference service for researchers unable to visit in person.

4.5 Copyright Status

For documentary heritage items that are subject to copyright, details should be provided on the relevant copyright legislation and copyright owner(s). Any other factors affecting the legal status of the documentary heritage should be noted. For example, is any institution required by law to preserve the documentary heritage in this nomination?

Beattie’s own work is in copyright, which is administered by his descendants. Other items in the collection may be copyright to other authors.

Section 5: Stakeholders

The nominating institution is accountable for consultation with all relevant stakeholders before submitting the nomination.

5.1 Owner

The owner(s) of the documentary heritage has been consulted: Yes

5.2 Custodian

The custodian(s) of the documentary heritage has been consulted: Yes

5.3 Significant Stakeholders

Stakeholders with a significant interest in the content of the documentary heritage e.g. iwi, family members, have been consulted, if relevant: Yes*

*There has been consultation with the Ngāi Tahu Archives Unit

Section 6: Care and Preservation and Risk Assessment

Identify any risks to the survival of the nominated documentary heritage. We understand if you have not done a formal risk assessment.

Note: a successful inscription may assist you to obtain funds to preserve and care for the nominated documentary heritage.

If your nomination is successful we may request additional information on the care and preservation of the inscribed documentary heritage.

All collection items are stored in preservation quality packaging.
The collection is kept under the general policies and practices of the Hocken Collections in relation to preservation and access.
The Hocken Collections Deed of Trust prevents the collection being disposed of, and stipulates that the originals are normally only available for consultation within the Hocken Collections reading rooms. Items from the collection may only be loaned to other institutions or individuals for specific purposes – exhibition and conservation.
Fire : Low – building is protected by early warning smoke detectors, alarms and sprinklers.
Water damage: Low – Presence of sprinkler system notwithstanding the collection is stored in archival containers on shelves with canopies. Shelving policy means nothing is allowed to overhang shelves.
Theft: Low – Archive is housed secure stack with security card access to limited range of library staff, high level of security and management of tradespeople. There are monitored and recorded CCTV cameras in staff and public areas. All unpublished material is issued folder by folder to a secure reading room to registered researchers. Researchers are monitored from the nearby service desk.
Reader/staff handling: Low/Medium – staff are trained in care and handling. Researchers use materials in closely -supervised reading room and are given pillows and other supports to minimise harm to fragile items. Preservation copies are issues in place of originals where they exist.
Deterioration through inherent vice: Low – Archive is housed in archival folders and envelopes and kept in a controlled environment designed to extend the life of the materials.
Natural disaster: Medium Although Dunedin is a lower risk for earthquake or volcanic activity than elsewhere in NZ – it is still a possibility. The University has recently assessed earthquake risk of its buildings and compiled a list of those requiring remedial action to bring to acceptable % code compliance; the Hocken building is not on that list. Shelving/housing practices are designed to minimise risk of impact on collections from earthquake activity.

Section 7: Summary

Provide a brief summary describing the documentary heritage and how it meets the criteria for inscription on the Aotearoa/New Zealand Memory of the World Register.

Keep your summary to no more than 300 words as, if successful, it will be used on the website (www.unescomow.org.nz) to describe why the documentary heritage has been inscribed on the New Zealand Register and given UNESCO recognition.

The Herries Beattie papers (1848 – 1972) are a remarkable body of materials compiled over a lifetime of research and writing about South Island history. Beginning as a boy of eleven, Beattie was an enthusiastic writer and collector and he pursued those intellectual passions alongside his career as a journalist, librarian and bookseller. Beattie's interests were expansive, ranging across natural history (especially birds), place names, local history and the experience of 'pioneers', Maori oral history and traditional life ways. He pursued these questions through reading, through the production of voluminous clipping-books, through interviewing the knowledgeable and the elderly, through corresponding with and exchanging material with other collectors, and through research trips.

A very significant part of the collection is the record of interviews with South Island Māori conducted by Beattie in the early 1920s as an ethnographical project done in collaboration with H.D. Skinner of the Otago Museum. Leading up to the Ngai Tahu claim to the Waitangi Tribunal (WAI27) researchers for iwi and the Crown used the Beattie papers repeatedly and valued them for providing reliable and detailed historical and ethnographic data.

Beattie wrote over 40 books, as well as journal and newspaper articles, and some of his writing has also been published posthumously. Researchers continue to use the collection regularly.

Section 8: Promotion of documentary heritage

Inscription to a UNESCO Memory of the World register provides an opportunity to promote the importance of documentary heritage.

Give a brief overview of how your institution will use the opportunity of a successful nomination to promote the Memory of the World programme and the importance of documentary heritage. You may wish to consult with communications staff in your organisation to provide an answer to this question.

We will do a press release, and also share any publicity that the MOW NZ Committee may promote. In the past local media has picked up this release and it has resulted in stories in local newspapers and in University news on website such as the Otago Bulletin.

We will also promote the inscription on Hocken social media streams.

The certificate of inscription will be displayed in a prominent place in the Hocken public spaces.

A note of the inscription will be added to the collection record on the online catalogue.

Notes of the inscription will be displayed at appropriate positions in the storage stacks where they may be seen by patrons taking a tour of the Hocken.

Section 9: Permission to use visual documentation

The Aotearoa/New Zealand Memory of the World Committee will also work with you and your communications staff to obtain publicity for the programme and for the successful inscriptions.

Do you give permission for the Committee to use the visual documentation you have provided for Aotearoa/New Zealand Memory of the World publicity purposes (e.g. for brochures/website)?

I would like to be consulted first

Section 10: Declaration of Authority

I am authorised to nominate the above documentary heritage to the Aotearoa/New Zealand Memory of the World Register.

Name: Anna Blackman

Date: 31 August 2018